



[www.Zricks.com](http://www.Zricks.com)

# BESTECH GROUP

**BESTECH**, a **Real Estate Conglomerate**, with an expertise of **over two decades** encompassing developments relating to **Residential, Commercial, Retail and Hospitality**. Established as one of the most admired business groups in India, the success stems from the strong foundations reflecting **quality construction, timely deliveries and customer satisfaction**. We truly **Build More Than TRUST**.

**BESTECH MISSION**, in today's real estate environment emphasizes on **three critical elements for success** which overlay the **four pillars of management: (1) Quality (2) Continuous Improvement (3) Deliverables (4) Highly Efficient Designs**.

**BESTECH** has an enviable portfolio to its credit, with a formidable in-house construction arm engaged across the four verticals.

**Residential** – Approx. 3 mn sq.ft delivered and approx. 7 mn sq.ft under construction in Gurgaon, Dharuhera & Tri City Mohali

**Commercial & IT/ITES** – Approx. 2 mn sq.ft office space delivered and approx. 1.2 mn sq.ft under construction

**Retail** – Approx. 1.4 mn sq.ft under construction in Gurgaon, Dharuhera and Mohali

**Hospitality** – Operational 5 Star Hotels at **INDORE & NAGPUR**, 4 Star Hotels at **Gurgaon & Noida**. Further, **Carlson Group** has tied up with **Bestech** for developing 50 hotels across PAN India as **“Park Inn by Radisson”**.

# BESTECH

## Creating a “Walk to Work Culture”



**PARK VIEW GRAND SPA**



**PARK VIEW ANANDA**



**BESTECH CITY DHARUHERA**



**PARK VIEW SPA NEXT**



**PARK VIEW SPA**



**PARK VIEW RESIDENCY**



**PARK VIEW CITY**

# BESTECH

## *“IT Parks”*



**BESTECH BUSINESS TOWER SOHNA ROAD**



**BESTECH CYBER PARK**



**ORIENT BESTECH BUSINESS TOWER**



**BESTECH BUSINESS TOWER MOHALI**

# BESTECH

## *“Commercial”*



**ATHENA TOWER, GURGAON**

# BESTECH

## *“Retail”*



**ATHENA**



**BESTECH CITY CENTER DHARUHERA**



**BESTECH SQUARE MOHALI**

# BESTECH

*“Hospitality”*



**RADISSON BLU GURGAON**



**RADISSON BLU INDORE**



**PARK PLAZA NOIDA**



**RADISSON BLU NAGPUR**

# BESTECH BUSINESS TOWER

## *“Façade Elevation”*



*A seamless integration of intelligence and workspace*  
An Intelligent workspace offering **7 Lac sq.ft** on **Sohna Road**.  
Large efficient floor plate of **80000 sq.ft G + 9 Floors**



# BESTECH BUSINESS TOWER

## OVER VIEW:

The majesty of Gurgaon district and the commitment of Bestech Group come together to create an incredibly impressive and landmark property on NH-8.

It is our pleasure to introduce ‘**BESTECH BUSINESS TOWER**’ a magnificent and engaging address for the global giants of the business world.

We intend to provide a work environment that’s second to none and provide a splendid contemporary architectural design that offers vistas of wide-open spaces, vibrant greens and buzzing surroundings to stay ahead of competition, work better and meet deadlines earlier.

The reasons we site for organizations to be a part of this development is:

- ❖ Location
- ❖ Easy accessibility & hassle free movement
- ❖ Well defined neighbors

# BESTECH BUSINESS TOWER

## LOCATION OF BESTECH BUSINESS TOWER :

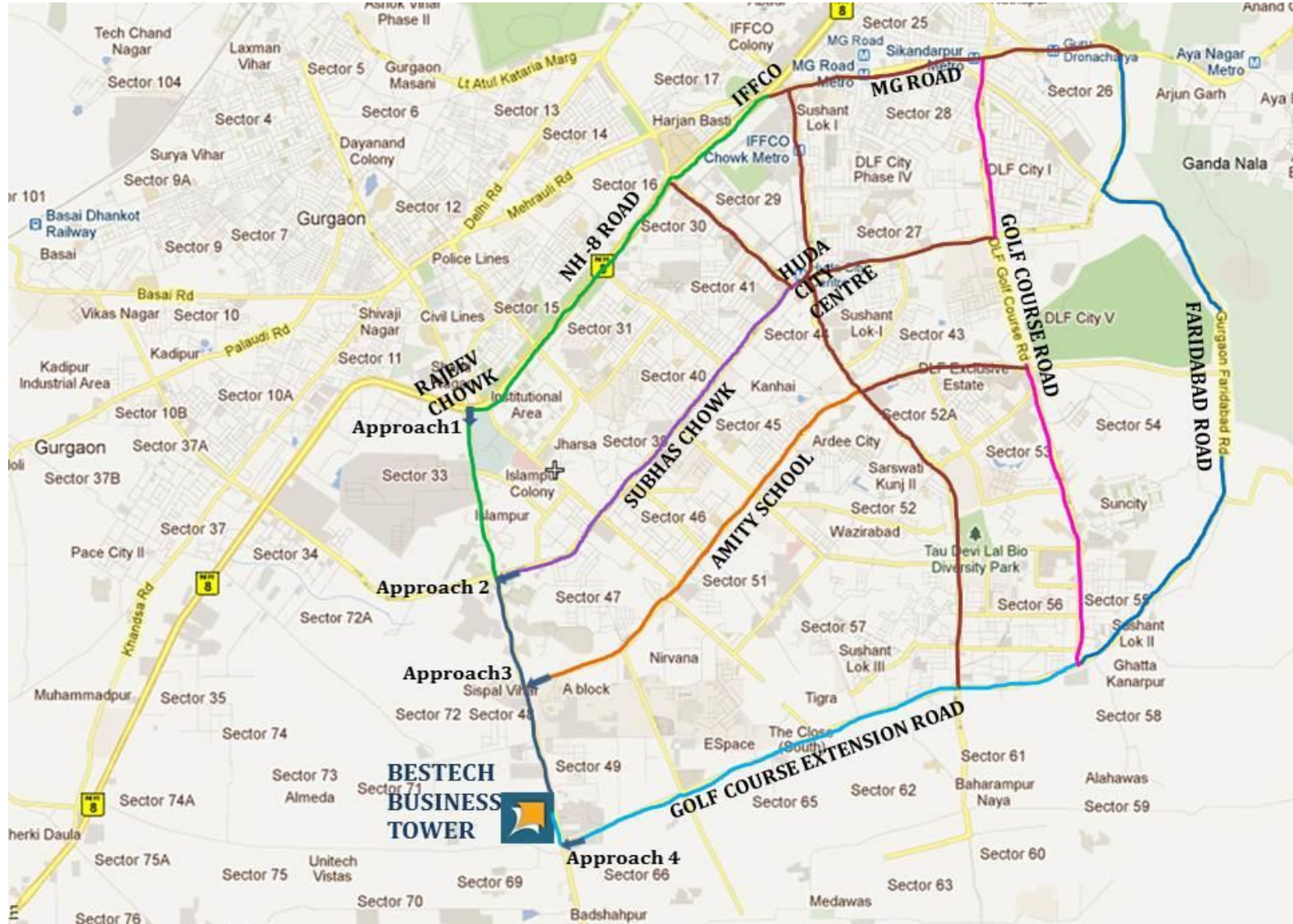
**BESTECH BUSINESS TOWER** is located in Sector 48, Sohna Road Gurgaon and is based in close proximity to the intersection of Golf Course Extension and Sohna Road. The location is easily accessible from the International Airport through express highway.

The site has excellent frontage and the development has excellent visibility from 60 meter wide road which ensures for the smooth traffic movement today and also in the years to come. Moreover it is in close proximity to the proposed metro station on Sohna Road which will take care of the future needs. The green belt in front of the site lends a favorable view, adding to its attractiveness to tenants.

The site is approximately 20 minutes from the The Indira Gandhi International Airport and from the Gurgaon Railway Station and approximately one hour drive from New Delhi railway station allowing for good domestic and international connectivity.

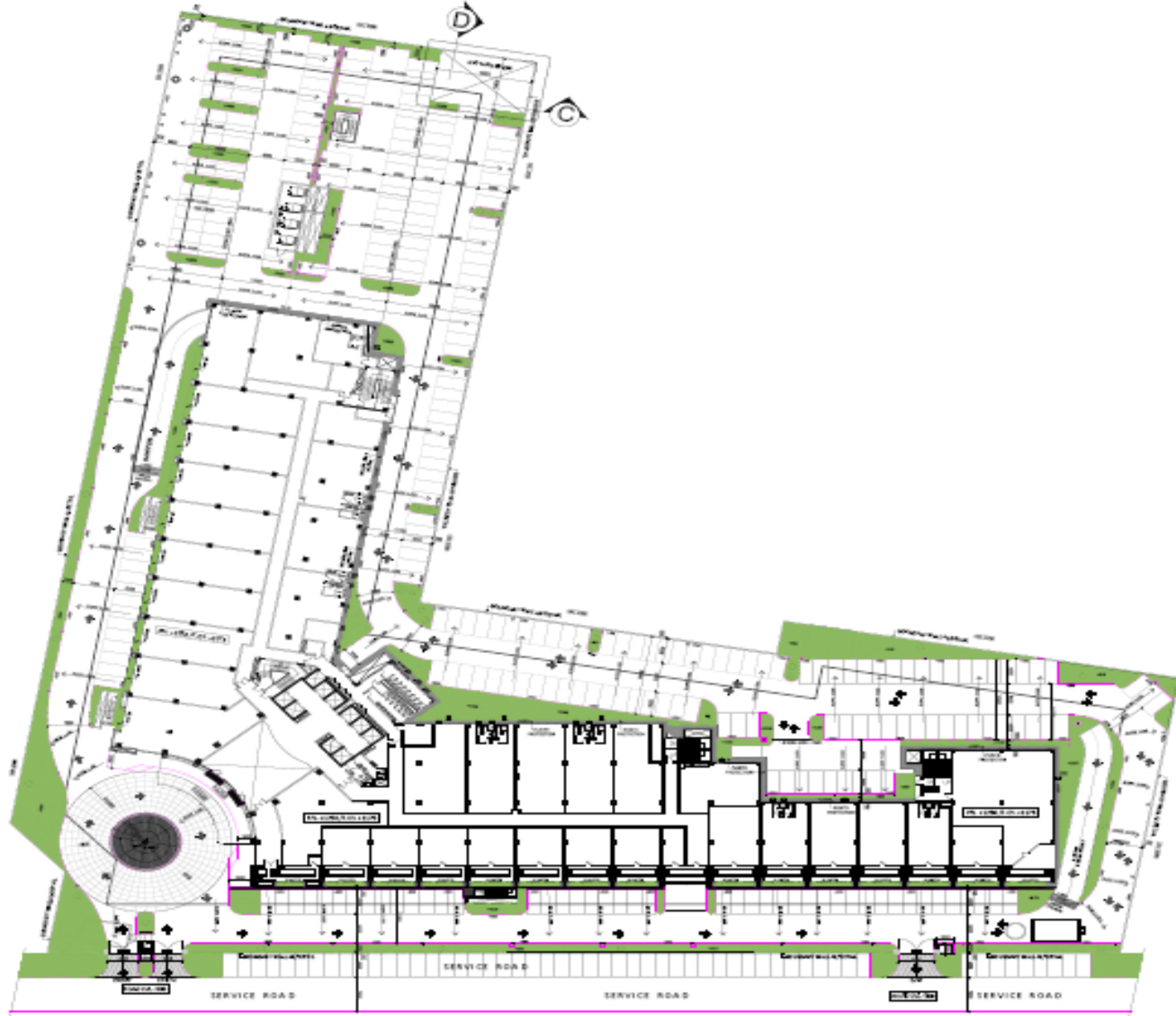
# BESTECH BUSINESS TOWER

## “MULTIPLE APPROACH”



# BESTECH BUSINESS TOWER

## *“Site Plan”*



# BESTECH BUSINESS TOWER

## DEVELOPMENT DETAILS:

**Location and Address:** Bestech Business Tower, Sector 48, Sohna Road, Gurgaon, Haryana.

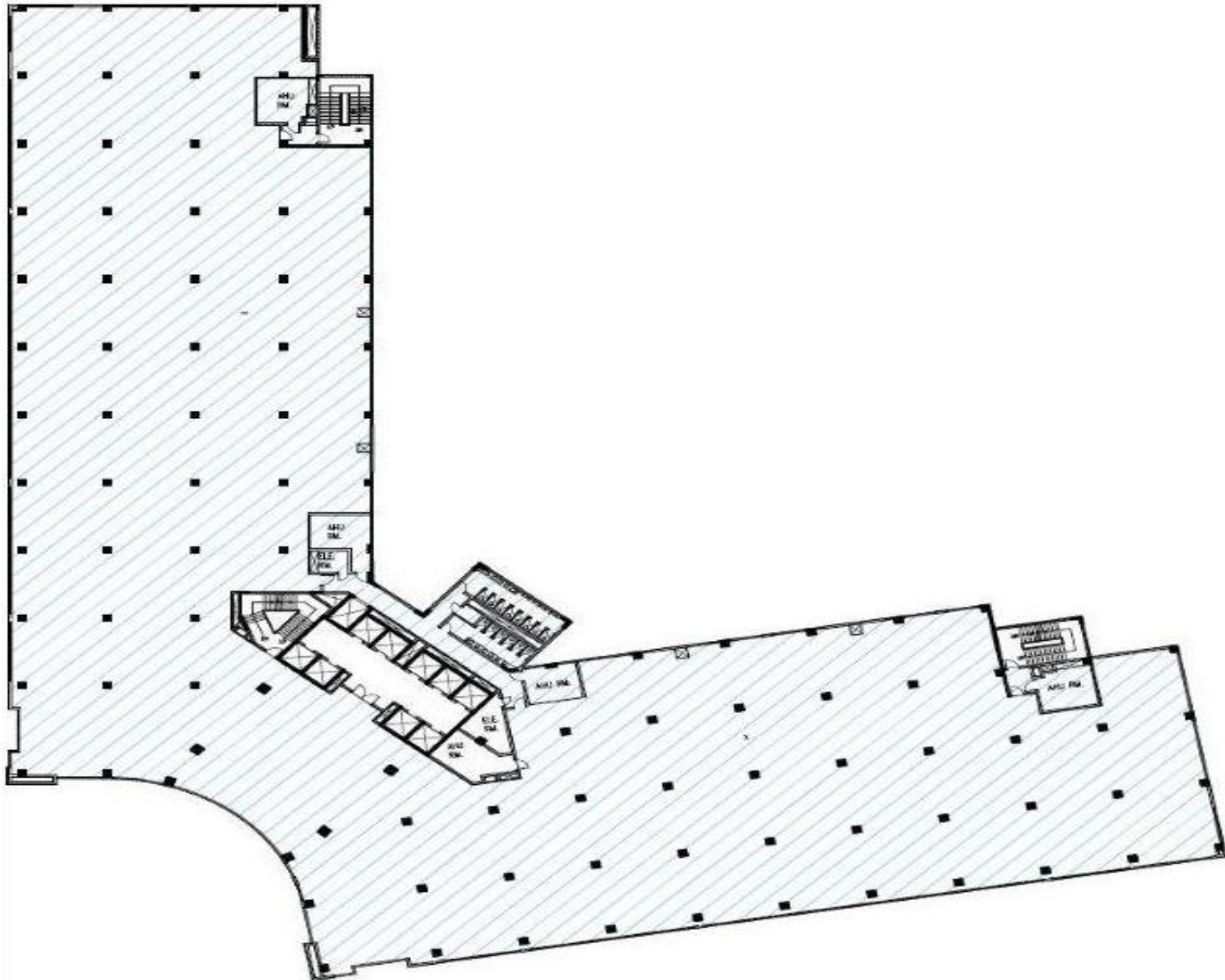
**Developer:** Bestech India Pvt. Ltd.

**Development:** Total approx. 700,000 sq.ft. of Grade 'A' IT\ITES office complex.  
Independent building with 2 Basements, Ground and 9 Upper Floors.

**Status:** Building Ready for Occupation

# BESTECH BUSINESS TOWER

## *“Typical Floor Plan”*



# BESTECH BUSINESS TOWER

## USP:

- Central air-conditioning
- 100% power back-up
- Modern Fire fighting system
- Open landscapes & refreshing water bodies
- High level of security with 24 hours CCTV monitoring
- 3 Level basements for car parking
- Double glazed façade
- Double height entrance Lobby finished with Italian Marble
- Energy efficient central air-conditioning
- Flat slab construction enabling excellent floor to ceiling height
- Provision for fiber-optic telecommunication
- High speed lifts



***Thank You!***

**[www.Zricks.com](http://www.Zricks.com)**